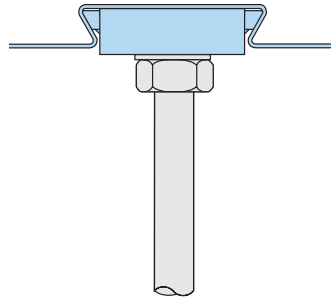
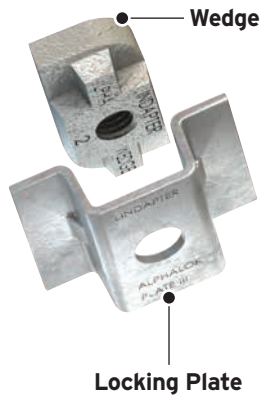


## Type AW - Alphawedge

Designed for Ribdeck E60 profiles manufactured by Richard Lees Decking (owned by William Hare).



For Characteristic Resistances when designing a connection to Eurocode 3, refer to DoP No.016 (CE) or DoP No.116 (UKCA) on Lindapter's website or request a DoP Brochure.



Locking Plate: Pre-galvanised strip. Wedge: Malleable iron, zinc plated.

| Product Code | Rod min 4.6 | Safe Working Load (FOS 3:1) |                         |
|--------------|-------------|-----------------------------|-------------------------|
|              |             | Tensile / 1 Rod<br>kN       | Tightening Torque<br>Nm |
| AW06         | M6          | 1.0                         | 10                      |
| AW08         | M8          | 1.0                         | 10                      |
| AW10         | M10         | 1.0                         | 10                      |

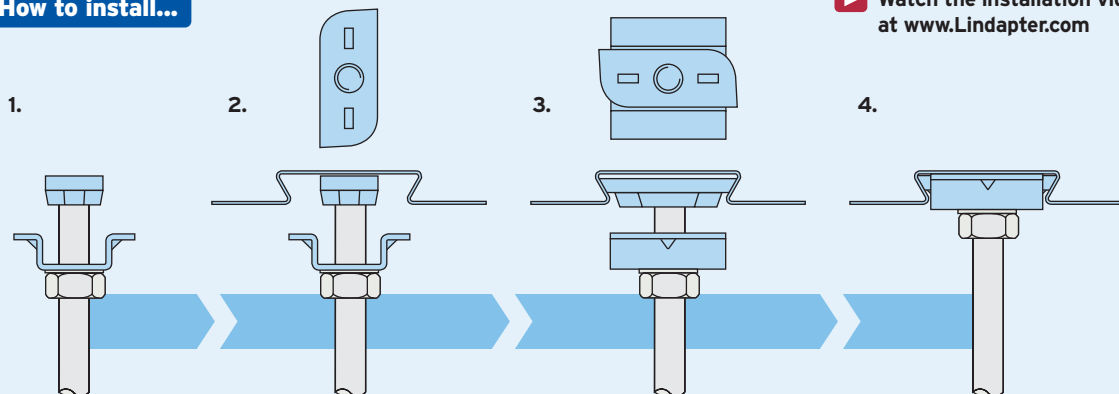
For fire ratings refer to [www.Lindapter.com](http://www.Lindapter.com)



### How to install...



Watch the installation video at [www.Lindapter.com](http://www.Lindapter.com)



- 1) Pre-assemble the Locking Plate and wedge (flat surface up) onto the threaded rod.
- 2) Insert the wedge into the re-entrant channel of the decking and rotate 90°.
- 3) Slide the plate up the threaded rod, over the wedge, to lock it in position into the channel.
- 4) To hold the assembly in position, tighten a nut beneath the plate and washer to the tightening torque specified in the table above.

- Install the decking fixings after the concrete has been poured and has reached full strength.
- If the decking profile is deformed or distorted, do not install the fixing. If in doubt, contact the Technical Support team for advice.
- Although the Type AW is similar in appearance to Type AMD (p. 68), it should NOT be used in profiles manufactured by AMDECK®.

# Decking Fixings

High quality, cost effective connections for securing building services. Designed to fit inside the dovetail re-entrant channels of popular composite decking profiles, Lindapter's fixings provide a zero-impact method that avoids delamination and damage to the decking.

## Lindapter Decking Fixings & Compatible Composite Decking Profile(s)

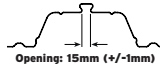
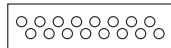
### Type COM

page 63



### Tata Steel

ComFlor® 60, 80 and 95



Opening: 15mm (+/-1mm)



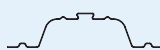
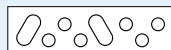
### Type TR60

page 64



### SMD®

TR60+™ and TR80+™



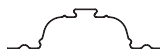
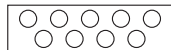
### Type MF

page 65



### CMF®

MetFloor® 60 and MetFloor® 80



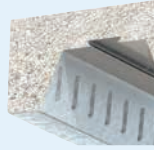
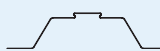
### Type MW2

Multiwedge 2  
page 66



### Kingspan®

Multideck MD60 and MD80



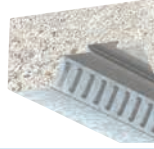
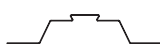
### Type AW

Alphawedge  
page 67



### Richard Lees Decking

Ribdeck E60



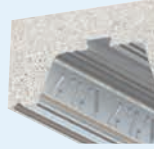
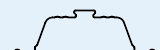
### Type AMD

page 68



### AMDECK®

AMDECK® 60 and AMDECK® 80



### Type SD2

Slimdek 2  
page 69



### Tata Steel

ComFlor® 225



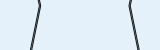
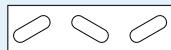
### Type SM

page 70



### Sigmat

SigDeck 100



### Type VN

page 71



### Fits several profiles including:

AMDECK® 54, R51+™, ComFlor® 51+,  
Holorib, Superib, Multideck MD50  
and MetFloor® 55.



### On-site capacity checks

Lindapter's Engineers can provide tensile tests on the full range of decking fixings. Available on request and subject to application.

