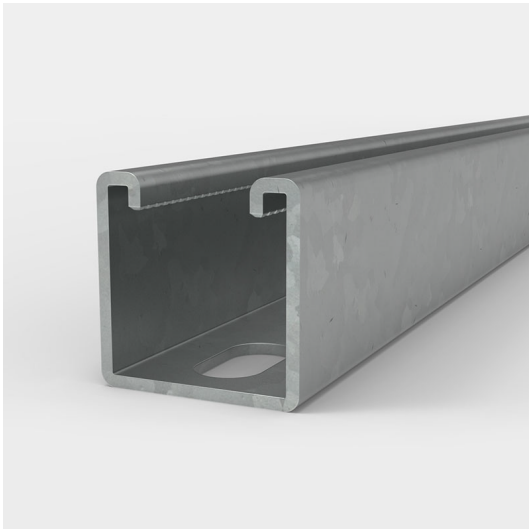


3m Heavy Gauge Slotted Pre-Galvanised Channel

Product Code: T021-423



Description

Slotted steel channel pre-galvanised

Material

2.5mm thick steel

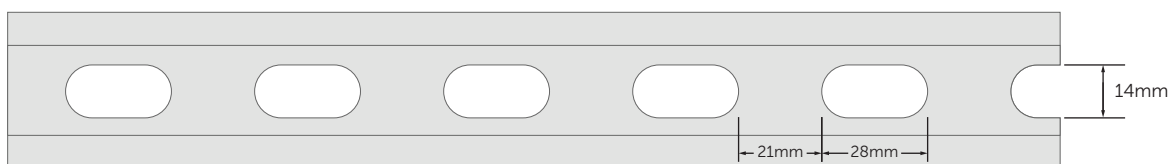
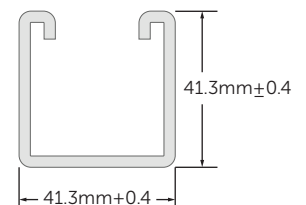
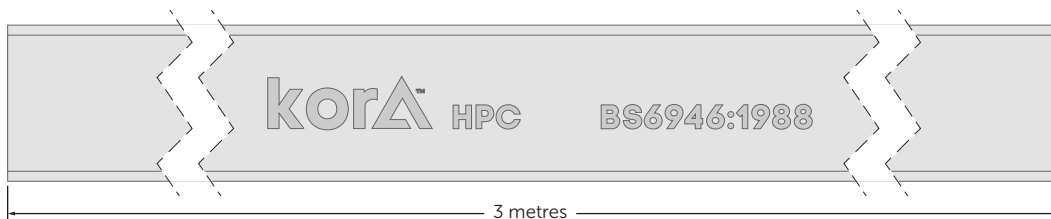
Dimensions

41mm x 41mm x 3m

Finish

Pre-Galvanised Zinc-plated $\geq 19\mu\text{m}$

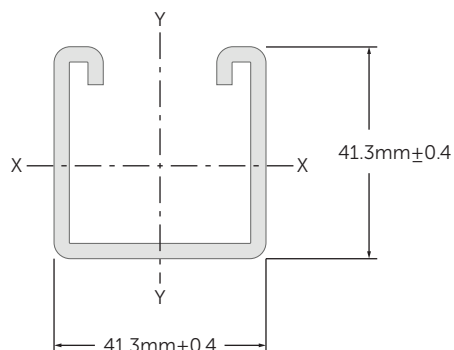
- Pack quantity 50 - Supplied separately
- Conforms to BS 6946:1988
- Each length is marked Kora HPC for traceability
- Teeth for ease of channel nut installation
- Very high grade galvanisation



Application

- Suspend services including electrical, pipework, sprinklers and ventilation systems.
- Enable frames to be built as freestanding units for supporting building services.
- Cut to required length for convenience, protect cut ends using a galvanising paint.



Load Data



Section properties

Area	3cm ²
Weight	2.73kg/m
I x-x	6.10cm ⁴
Z x-x	2.87cm ³
r y-y	1.42cm
I y-y	9.17cm ⁴
Z y-y	4.44cm ³
r y-y	1.42cm

Length (mm)	Max Uniform Load (kg)	Deflection at Max Load (mm)	Column Max Load (kg)
500	860	1.0	4580
1000	430	4.0	3080
1500	285	8.95	2320
2000	215	15.90	1860
2500	170	24.85	1560
3000	140	35.75	-

Material	Coating
<div style="text-align: center;">  A Steel </div>	<div style="text-align: center;">  Z ZINC Pre-Galvanised Zinc-plated $\geq 19\mu\text{m}$ </div>