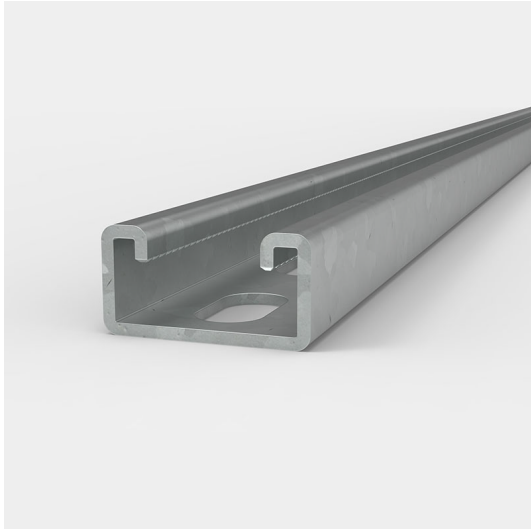


3m Heavy Gauge Slotted Pre-Galvanised Channel

Product Code: T021-223



Description

Slotted steel channel pre-galvanised

Material

2.5mm thick steel

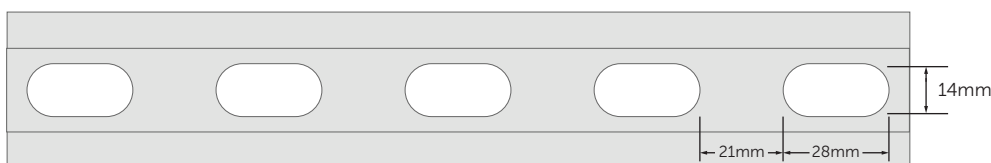
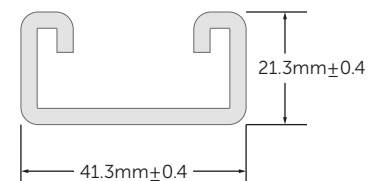
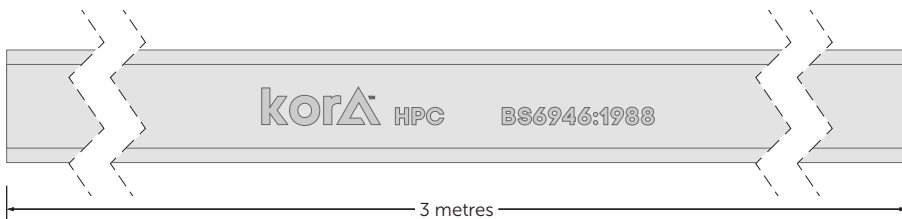
Dimensions

41mm x 21mm x 3m

Finish

Pre-Galvanised Zinc-plated $\geq 19\mu\text{m}$

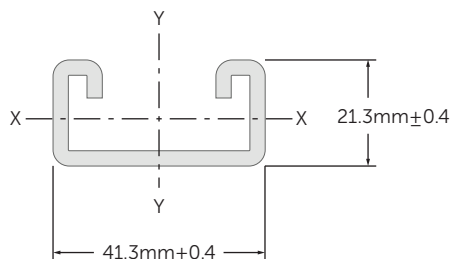
- Pack quantity 50 - Supplied separately
- Conforms to BS 6946:1988
- Each length is marked Kora HPC for traceability
- Teeth for ease of channel nut installation
- Very high grade galvanisation



Application

- Suspend services including electrical, pipework, sprinklers and ventilation systems.
- Enable frames to be built as freestanding units for supporting building services.
- Cut to required length for convenience, protect cut ends using a galvanising paint.

Load Data



Section properties	
Area	2.075cm ²
Weight	1.76kg/m
I x-x	1.04cm ⁴
Z x-x	0.92cm ³
r y-y	0.71cm
I y-y	5.32cm ⁴
Z y-y	2.57cm ³
r y-y	1.61cm

Length (mm)	Max Uniform Load (kg)	Deflection at Max Load (mm)	Column Max Load (kg)
500	280	2.25	3060
1000	140	8.85	2040
1500	95	19.95	-
2000	70	35.25	-
2500	55	55.05	-
3000	45	79.85	-

Material	Coating
 Steel	 Pre-Galvanised Zinc-plated $\geq 19\mu\text{m}$